

AUTHOR CORRECTION

Open Access



Author Correction: Identification and characterization of a set of conserved and new regulators of cytoskeletal organization, cell morphology and migration

Siau Wei Bai^{1,5}, Maria Teresa Herrera-Abreu¹, Jennifer L Rohn², Victor Racine^{3,5}, Virginia Tajadura¹, Narendra Suryavanshi¹, Stephanie Bechtel⁴, Stefan Wiemann⁴, Buzz Baum² and Anne J Ridley^{1*}

Correction: BMC Biol 9, 54 (2011)

<https://doi.org/10.1186/1741-7007-9-54>

Following publication of the original article, [1], the authors noticed that Fig. 6 contained an error. The images for siARC were incorrect and were the same as the siZ-RANB images. The correct siARC images have now been put into the figure.

Please see the correct figure below. The conclusions of the paper are unaffected.

HeLa cells were transfected with the siRNA pools for the indicated PMMs in thin-bottomed multi-well plates then fixed after 72 h and stained for F-actin (red), tubulin

(green) and DNA (DAPI, blue). Images shown are the maximum projection of a z-stack; scale bar, 50 μ m.

Published online: 10 October 2024

Reference

1. Bai SW, Herrera-Abreu MT, Rohn JL, et al. Identification and characterization of a set of conserved and new regulators of cytoskeletal organization, cell morphology and migration. *BMC Biol.* 2011;9:54. <https://doi.org/10.1186/1741-7007-9-54>.

The original article can be found online at <https://doi.org/10.1186/1741-7007-9-54>.

*Correspondence:

Anne J Ridley
anne.ridley@kcl.ac.uk

¹ Randall Division of Cell and Molecular Biophysics, King's College London, New Hunt's House, Guy's Campus, London SE1 1UL, UK

² MRC Laboratory of Molecular Cell Biology, University College London, Gower Street, London WC1E 6BT, UK

³ Institute of Molecular and Cellular Biology, 61 Biopolis Drive, Proteos 138673, Singapore

⁴ Deutsches Krebsforschungszentrum, Im Neuenheimer Feld 280, Heidelberg, Germany

⁵ SWB, Institut Pasteur, 25-28 Rue du Docteur Roux, 75015 PARIS; VR, Fluofarma, 2 Rue Robert Escarpit, 33600 Pessac, France



© The Author(s) 2024. **Open Access** This article is licensed under a Creative Commons Attribution-NonCommercial-NoDerivatives 4.0 International License, which permits any non-commercial use, sharing, distribution and reproduction in any medium or format, as long as you give appropriate credit to the original author(s) and the source, provide a link to the Creative Commons licence, and indicate if you modified the licensed material. You do not have permission under this licence to share adapted material derived from this article or parts of it. The images or other third party material in this article are included in the article's Creative Commons licence, unless indicated otherwise in a credit line to the material. If material is not included in the article's Creative Commons licence and your intended use is not permitted by statutory regulation or exceeds the permitted use, you will need to obtain permission directly from the copyright holder. To view a copy of this licence, visit <http://creativecommons.org/licenses/by-nc-nd/4.0/>.

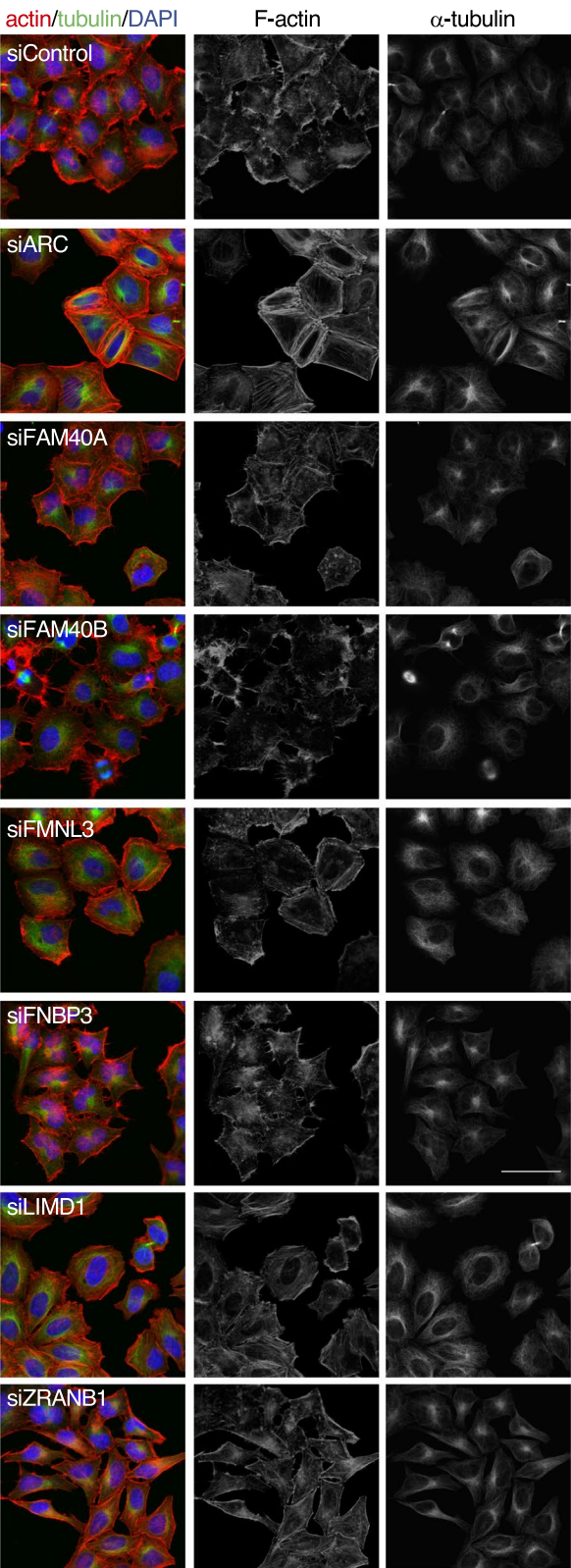


Fig. 6 Effects of PMM depletion on cytoskeletal organisation in HeLa cells